

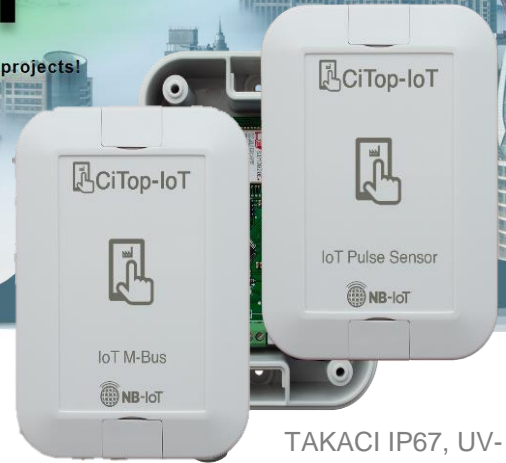
Automation manufacturer & supplier



CiTop-IoT

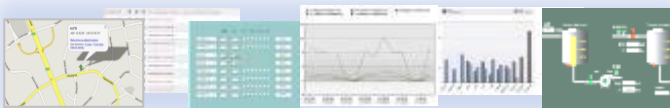
Delivers green light into your IoT automation projects!

Learn more



LRW100 Lora sensor

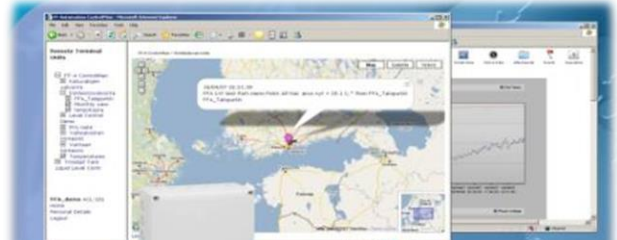
The Industrial Sensor LoRaWAN "(LRW100)" is used in various fields of industry, utilities and automation, for remote data collection and transmission via LoRaWAN networks. The device has universal digital inputs, analog inputs for measuring standard 4-20mA / 0-10V signals, serial interfaces RS485/232, 1-WIRE, I2C, inputs for monitoring the integrity of communication lines. The device is equipped with an internal battery and also has a built-in voltage converter that provides operation from an external DC voltage source. There are two outputs for controlling external devices.



The design of the sensor in a waterproof housing allows external use. The compact size allows installation in confined spaces, and special adapters provide reliable mounting to a pipe or flat surface without opening the enclosure. Data can be monitored using CiTop-IoT's Cloud based IoT-SCADA system

Connection: M12 quick connector or cable to terminal block.. Enclosure: IP67

TAKACI IP67, UV-PROTECT NETWORK PLASTIC BOX



- Compliance with LoRaWAN 1.0.2 Class A,C
- Frequency plan of LoRaWAN EU868/US915
- Power of transmitter, mW 25/100
- Digital inputs 4
- 1 Analog inputs 4-20mA
- 2 Analog inputs 0-10V
- 2 Serial interface RS485/232, I2C
- 2 Outputs, maximum output load current, mA 500
- Connection of external antenna
- Available Magnetic sensor Built-in
- Accelerometer Built-in
- Archive of events and messages 100 000
- External power supply, V 5-55
- Built-in battery Li-SOCI2 C or alkaline C- Cell
- Battery capacity, mAh 6-9000
- Ambient temperature, °C -30 ...+75°C
- Weight, g 250
- Dimensions, WxDxH mm 100x100x4
- Protection IP67 (Takachi)



Contact us for more information!

CiTop-IoT Oy
 +358291700096
info@citop-iot.com
www.citop-iot.com